



# MANITOU SPRINGS OPEN SPACE ADVISORY COMMITTEE REGULAR MEETING AGENDA

This meeting will be held in-person at 701 Manitou Avenue (Manitou Public Library) *and* via Zoom. A link is provided on the City's Official Website at <https://www.manitouspringsgov.com/544/All-Boards-and-Commissions>

July 28, 2025

6:00 PM

## A. CALL TO ORDER & ANNOUNCEMENT OF MEMBER OPENINGS

1. Three (3) Alternate Positions Open

## B. ROLL CALL

## C. AGENDA REVIEW and PUBLIC COMMENT ON NON-AGENDA ITEMS

## D. REPORTS

1. Director's Report
  - a. 0 Beckers Lane Split Rail Fence Funding Request
  - b. Creek Walk Phase 6 Update

## E. OLD BUSINESS

1. Bill Bauers Open Space
  - a. Update on professional survey design, costs, and next steps (Gillian)
2. Rocky Mountain Field Institute 2025 Project Closeout
  - a. Review and discussion on "Manitou Open Space Final Report" (All)
3. Black Canyon Open Space
  - a. Fire Mitigation Update (Judy)
  - b. Homeless Camp Cleanup Report/Discussion on hiring Keep Colorado Springs Beautiful for remaining debris
  - c. Next Steps for Master Plan Implementation (Gillian)
4. Trail Maintenance
  - a. Update on Intemann Trail Wayfinding Project (Dave)
  - b. Iron Mountain Trail Maintenance Update (Gillian, Dave, Paul)

## F. NEW BUSINESS

1. 2026 Goals/Budget Planning Workshop Summary (All)
2. Discussion on using 121 Pawnee for a Pollinator Garden (Garden Club representatives, Gillian)

3. COSA Conference – Registration Open for Oct. 6-8 Conference in Steamboat Springs
  - a. Determine which OSAC Members can attend.
4. Consider recommending approval of three (3) proposed land donations adjacent to Black Canyon Open Space to City Council.

**G. FUTURE AGENDA ITEMS**

1. Presentations from City Clerk and Deputy City Clerk on (1) Colorado Sunshine Law and (2) Open Records Law & Process

**H. ADJOURNMENT**

**Committee Members:**

David Conley, Chair (03/31/2028)  
Paul Arlinghaus, Vice Chair (03/21/2029)  
Judy Carnick, Committee Member (03/31/2029)  
Sheryl Cline, Committee Member (03/31/2026)  
Robin Kovats, Committee Member (3/31/2026)  
Anthony "TJ" Maltese, Committee Member (03/31/2029)  
Andrea Sutela, Committee Member (03/31/2028)

**Staff and Liaisons:**

Judith Chandler, Council Liaison  
Gillian Rossi, Parks & Recreation Director

*3 alternate positions available*

The City of Manitou Springs does not discriminate on the basis of disability in the admission to, access to, or operations of programs, services or activities. Reasonable accommodation will be provided to ensure equal access to all. Individuals who would like to request auxiliary aids or services should contact the ADA Coordinator at (719) 685-5481 or [jfryer@manitouspringsco.gov](mailto:jfryer@manitouspringsco.gov). You may also contact the City Clerk's Office at [cityclerk@manitouspringsco.gov](mailto:cityclerk@manitouspringsco.gov) or (719) 685-2554. Please provide a minimum of 3-5 days advance notice.

Interested citizens are invited to serve on any of the City's Boards or Commissions. Please contact the City Clerk's Office for more information or visit our website at: [www.manitouspringsgov.com](http://www.manitouspringsgov.com).

**0 Beckers Lane  
Fence Replacement Project  
Funding Request**

The Parks & Recreation Department plans to remove the last remaining section of chain link fence from the 0 Beckers Lane property in early August. The fence will be replaced with a split rail fence, similar to the style at the Dillon Mobility Hub.

The Parks & Recreation Department would like to request **\$600 in funding** for materials from OSAC for this project. Materials include rails, fence posts, and concrete.



*Figure 1 Chain link fence at the west boundary line of 0 Beckers Lane.*



**Manitou Open Space**  
**Final Report**  
June 26, 2025



Rocky Mountain Field Institute  
1485 Garden of the Gods Road, Suite 140  
Colorado Springs, CO 80907

*Dedicated to the conservation and stewardship of public lands in Southern Colorado.*

**Background:**

Rocky Mountain Field Institute (RMFI) began working on properties managed by the City of Manitou Springs Parks, Recreation, Open Space, and Trails Department (MSPR) in 2021. The success of that partnership in 2021 set the groundwork for RMFI's increased stewardship relationship with MSPR and RMFI has since performed annual stewardship work under several multi-year agreements. 2025 marks the third year under the current 3-year agreement. RMFI collaborates with MSPR and the Manitou Springs Open Space Advisory Committee (OSAC) to determine stewardship priorities each year.

On April 16, 2025, representatives from RMFI, MSPR, and OSAC completed a site visit to identify priority work objectives for 12 days of RMFI stewardship scheduled for May 2025. All representatives agreed that the primary objective for 2025 would be constructing a trail reroute to bypass a steep and eroded section of the Intemann Trail northeast of the Intemann Trail and Red Mountain Trail Intersections. The new multi-use trail will primarily be used by hikers, runners, and mountain bikers. The new trail passes through a private property easement. Prior to the project start, MSPR obtained permission from the landowner for the rerouted trail to be constructed through the private property.

**Schedule:**

The project work was completed over 12 days, starting May 14 and ending May 31. The five-person RMFI crew worked Wednesday-Saturday, 10-hour days.

**Work Summary:**

RMFI completed the Intemann Trail reroute ahead of schedule, and additional work priorities were identified collaboratively between RMFI, MSPR and OSAC. These priorities included repairs on the Intemann Trail behind Manitou High School, and renovating the trailhead steps at the Intemann Trailhead on Crystal Park Road. See pages 3-8 for work site descriptions and photos.

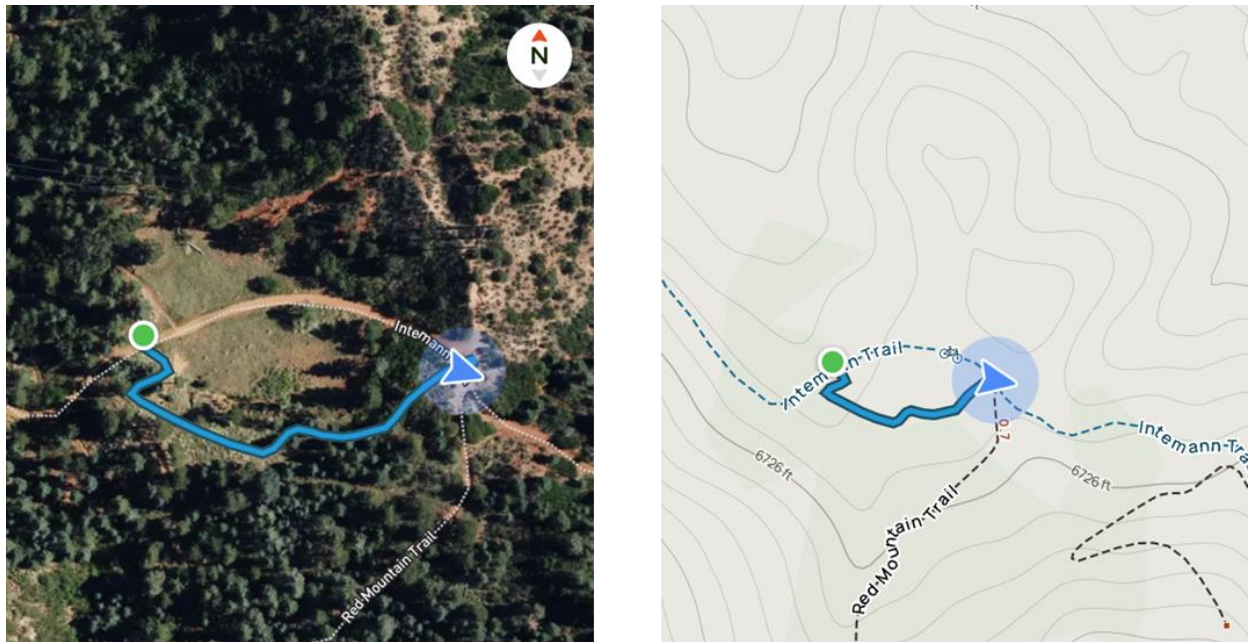
MSPR approved the purchase of materials throughout the project and assisted with the delivery of rock and timber to the worksites. RMFI purchased rock from C&C sand and stone for constructing the ramp structure and submitted an invoice to MSPR for reimbursement.

**2025 Work Accomplishments:**

- 381 linear feet trail tread built
- 306 linear feet trail tread improved
- 50 linear feet trail corridor cleared
- 5 timber steps built
- 52 square feet tread paved/armored
- 19 grade dips/drains built
- 6 drains maintained
- 16 square feet rubble wall built
- 25 linear feet rock monowall built

**Intemann Trail Reroute:**

RMFI cut approximately 381 linear feet of new trail with an average 24 inch tread width. See figure 1 for maps of the reroute. An armored rock ramp was constructed at the upper trail entrance to accommodate bikes and hiker access. Additionally, 25 linear feet of rock monowall was constructed on the trail edge to support a trail section with a steep downslope. Two climbing turns descend the slope to intersect with the current Intemann Trail. New drains were constructed and the tread was gently outsloped to shed water and increase the sustainability of the new trail. See figures 2-6.



*Figure 1: Map views of the Intemann Trail reroute. The new trail is highlighted in blue.*



*Figure 2: Before (left) and after (right) of rock armored ramp at the reroute entrance.*



*Figure 3: Before (left) and after (right) of Intemann Trail reroute.*



*Figure 4: Before (left) and after (right) of Intemann Trail reroute.*



*Figure 5: Before (left) and after (right) of Intemann Trail reroute.*



*Figure 6: RMFI crew building a rock armored ramp at the top of the trail reroute.*



*Figure 7: RMFI crew digging and refining the new trail.*

### **Intemann Trail behind Manitou Springs High School:**

Involving the local community in trail stewardship is an important part of RMFI's mission. RMFI hosted a community stewardship volunteer day during the project on May 24, 2025. OSAC and RMFI identified a length of Intemann Trail behind Manitou Springs High School as a suitable location to focus volunteer efforts. Work priorities for the volunteer day included removal of the berm on the downslope of the trail, construction of drains to fix ongoing erosion issues, and renovation of a failing timber structure. The failing timber structure was a combination step and wall that spanned a steep section of bedrock. To repair the structure two timber steps were built, rocks were placed to remove the gap beneath the timber wall, and dirt fill was added to backfill the new steps. A total of 9 volunteers contributed 49.5 hours to the project. See figures 8-10.



*Figure 8: Before (left) and after (right) A failing timber structure rebuilt on Intemann Trail.*



*Figure 9: Volunteers removing the berm and building drains.*



*Figure 10: Volunteers repairing the failing timber structure.*

### **Intemann Trailhead Steps on Crystal Park Road:**

The Intemann Trailhead steps, located at Crystal Park Road, were overgrown, covered in loose gravel, and a social trail had formed on the slope next to the steps. Additionally, a step riser was missing from the staircase. RMFI renovated the staircase, reestablished the step platforms, replaced the missing timber riser, installed two additional steps above the staircase, and restored the social trail with transplants. See figure 11.

NOTE: A patch of poison ivy was growing next to and spreading onto the staircase, which may be contributing to trail users navigating around the steps. RMFI cut back the poison ivy that was closest to the steps but recommends MSPR monitor the vegetation beside the steps and remove more poison ivy if it becomes a continuing issue.



*Figure 11: Before (left) and after (right) of trailhead steps repaired at Intemann Trailhead.*

Report prepared by:  
Elizabeth Barber  
Program Manager  
[elizabeth@rmfi.org](mailto:elizabeth@rmfi.org)  
(719) 377-1123

# PRESS RELEASE



FOR IMMEDIATE RELEASE  
July 17, 2025  
PIO@ManitouSpringsCO.gov  
(719) 306-2884

## MSPD-Led Cleanup Makes Progress in Black Canyon Next Volunteer Event Scheduled for Sept. 13

MANITOU SPRINGS CO – The Manitou Springs Police Department (MSPD) successfully hosted a volunteer cleanup of the Black Canyon Open Space on Sunday, July 13, as part of its ongoing efforts to promote public safety and environmental stewardship.

Nearly 20 volunteers participated in the event, including Christina Grow, a board member of the Parks and Recreation Advisory Board (PARAB); members and families from the Colorado Timberwolves Youth Baseball Team; Officer Gary Johnson; and City Public Information Officer Cassandra Hessel. Volunteers ranged in age from 5 years old to older adults.







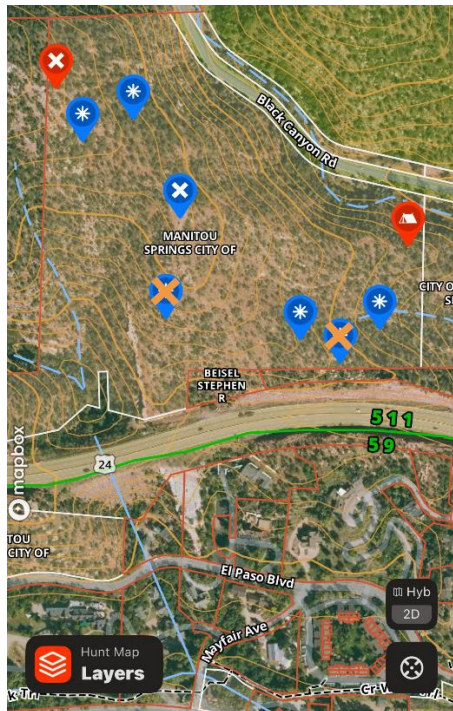
The City of Manitou Springs and MSPD extend sincere thanks to all participants for their dedication and hard work in challenging, hot conditions. Special thanks go to The Home Depot, located at 7120 N. Academy Blvd. in Colorado Springs, for donating trash pickers, buckets and bags to support the effort.

Volunteers met at the intersection of Black Canyon and Garden Drive and hiked into steep terrain to access several illegal campsites. Of the seven camps identified, one



and a half were cleared during the event (marked by the orange “X” in the map). Approximately 18 bags of trash and debris were hauled out of the open space. A site nicknamed “the pit of despair”, due to its size, was fully cleared, while a second off-trail site, hidden behind a rock face, was only partially addressed due to the volume and weight of debris.

Since the cleanup, two additional camps have been discovered (marked in red in the map), underscoring the need for regular monitoring and continued volunteer assistance.



MSPD will host another cleanup event on Saturday, Sept. 13, from 8 a.m. to noon. Volunteers will again meet at Black Canyon and Garden Drive, with parking available along El Paso Boulevard near Fields Park.

Participants are encouraged to wear sturdy footwear, bring gloves and water, and apply sunscreen. Trash bags and tools will be provided.

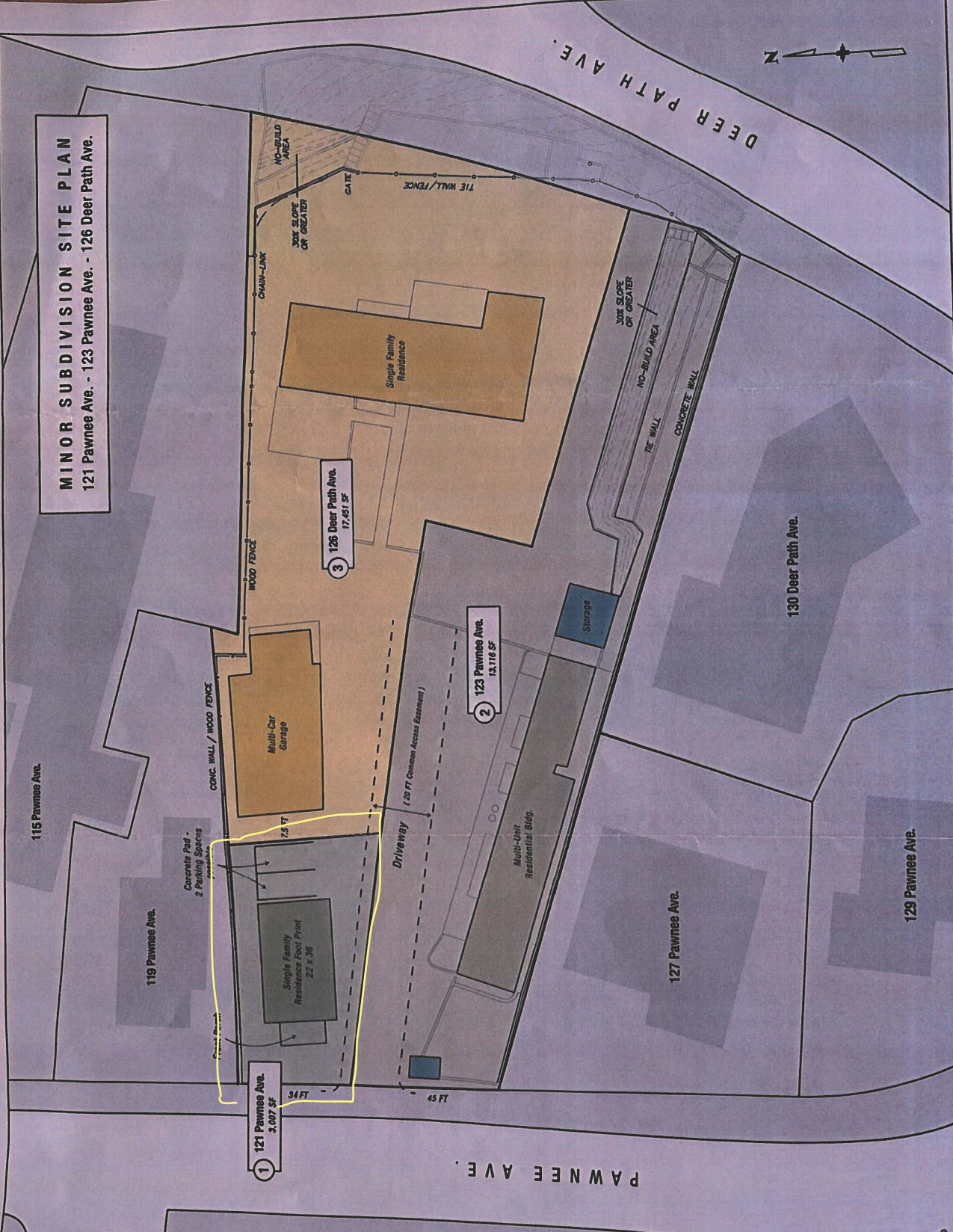
To register, visit: <https://bit.ly/VolunteerManitou>

**Point of Contact:** SRO Johnson or Sgt. Strand, Manitou Springs Police Department 719-685-5407.

Follow Manitou Springs Police Department on Facebook: [Manitou Springs PD Facebook Page](#) or on Instagram: [Manitou Springs PD Instagram Page](#)

###

**MINOR SUBDIVISION SITE PLAN**  
 121 Pawnee Ave. - 123 Pawnee Ave. - 126 Deer Path Ave.



115 Pawnee Ave.

119 Pawnee Ave.

1 121 Pawnee Ave.  
3,007 SF

3 126 Deer Path Ave.  
17,451 SF

2 123 Pawnee Ave.  
13,116 SF

127 Pawnee Ave.

129 Pawnee Ave.

130 Deer Path Ave.

DEER PATH AVE.

PAWNEE AVE.



**121 Pawnee Avenue (Open Space Parcel)**



**Celebrating Stories of Open Space: 25 Years of Conservation and Connections**  
**The Steamboat Grand, Steamboat Springs, Colorado**  
**October 5 - October 8, 2025**

**Sunday, October 5**

- 4:00-5:30 pm Early Arrival Registration

**Monday, October 6**

- 7:00 – 8:45 am Registration and Sponsor Expo
- 7:30 – 8:30 am Breakfast and Conference Welcome

*Please note that Sessions are subject to change*

**Session 1: 9:00 – 10:15 am (75 MIN)**

1A	1B	1C	1D	1E	1F
40 from 40	<b>Part 1: Weaving Story Into Stewardship: Tools for Meaningful Connection</b>	<b>Building Bridges: Community Engagement Best Practices between Latinx Spaces and Ranger Agencies</b>	<b>Outdoors Online: Using Social Media for Education, Inclusivity, and Engagement</b>	<b>Playing in the Margins: Where Open Space, Urban Space, and Community Meet</b>	<b>Panel Discussion: Cultural Resource Management within a Natural Resource World</b>

**Session 2: 10:30 – 11:45 am (75 MIN)**

2A	2B	2C	2D	2E	2F
<b>GOCO: Strategic Plan and Funding Opportunity Update</b>	<b>Part 2- Weaving Story Into Stewardship: Tools for Meaningful Connection</b>	<b>The Good, the Bad, and the Future: E-bikes for Ranger Patrol and Solving Trail Etiquette Conundrums</b>	<b>Implementing Prescribed Fire in Natural Areas</b>	<b>Making Nature Accessible: Bluff Lake Nature Center’s Campus Improvements Project</b>	<b>Keystone Connections: Bison as a Catalyst for Ecological and Cultural Resilience</b>

- 12:15 pm – 1:30 pm Lunch and Great Outdoors Colorado (GOCO) Welcome

**Session 3: 2:00 – 2:45 pm (45 MIN)**

3A	3B	3C	3D	3E	3F
<b>Collaborate to Increase Your Capacity: Co-Running Volunteer Programs with Partner Agencies</b>	<b>Data-Driven Decisions in the Field: Stories from the Frontlines of Land Management</b>	<b>Baby BAER: Scaling Down BAER Principles for Rapid Post-Fire Response in Jefferson County Open Space</b>	<b>Three Approaches to OPDMD Policy (mobility devices)</b>	<b>Restoring Balance: Grazing, Grasslands, and Community Connection</b>	<b>Empathetic Enforcement with At-Risk Youth</b>



**Session 4: 3:00 – 3:45 pm (45 MIN)**

4A	4B	4C	4D	4E	4F
<b>Forest Legacy Program: Big Opportunity for Open Space Conservation</b>	<b>Historic Splendid Valley, a story of protecting irrigated agriculture</b>	<b>Making a Climate Action Plan for your Agency: Playbook from City of Boulder's Open Space &amp; Mountain Parks</b>	<b>Measuring the Impact of Outdoor Recreation on Bird Communities in Colorado</b>	<b>Accessible Trail Data - Where We Are and Where We're Headed</b>	<b>COSA Governance</b>

- 4:30 – 6:15 pm 25<sup>th</sup> Anniversary Networking Event – Pizza and Film
- 6:30 – 8:00 pm Mountainfilm on Tour

**Tuesday, October 7**

- 7:00 – 8:00 pm Registration and Sponsor Expo
- 7:30 – 9:30 pm Breakfast and Keynote Speaker Christopher Preston

**Session 5: 9:50 – 10:35 am (45 min)**

5A	5B	5C	5D	5E	5F
<b>To be British in a Rocky Mountain World: A Chat with Christopher Preston</b>	<b>Shifting Landscapes: Redefining Ranger Engagement in Environmental Education</b>	<b>Three agencies and their approaches to developing and implementing strategic plans</b>	<b>Colorado's Vital Landscapes and Resources: A preview of DOLA's Local &amp; Regional Planning Guide and Playbook</b>	<b>10 Years of Connecting Open Space and Sense of Place: Urban Prairies Project</b>	<b>Implementing Technology for Revenue Capture</b>

**Session 6: 10:50 am – 12:05 PM (75 min)**

6A	6B	6C	6D	6E	6F
<b>Director Session</b>	<b>Lincoln Hills Past and Present: Exploring Culturally Responsive Teaching in Outdoor Education</b>	<b>From Routine to Rescue: Navigating Task-Focused vs. Crisis-Focused Communication</b>	<b>This Is What Winning Looks Like. Playing it Forward: The Colorado Lottery's Outdoors Legacy</b>	<b>The Power of Place: Reimagining Access and Protection at Paint Mines Interpretive Park</b>	<b>"Mirasol, Looking At the Sun", protecting irrigated farming</b>

- 12:00 – 1:00 pm Boxed Lunch Pick-up
- 1:30 – 5:00 pm Field Trips (check-in at 1:15 pm)
- 6:30 – 9:30 pm Rocky Mountain Ranger Association After Party at Snow Bowl (ticketed event)



**Wednesday, October 8**

- 8:00 – 9:00 am Breakfast
- 8:30 – 9:30 am COSA Blue Grama Award and Rocky Mountain Ranger Association Recognition
- 9:30 – 10:00 am Hotel check out

**Session 7: 10:00 – 11:45 am (75 min)**

7A	7B	7C	7D	7E	7F
<b>Effective Public Outreach and Engagement: From New Properties to Hot Spot Solutions</b>	<b>Bringing the Stories of Open Space to Life: Enhancing Visitor Engagement with Augmented Reality</b>	<b>Boating Incident and Drowning Response and Investigations</b>	<b>From Grant to Groundwork: Advancing Accessible Trails Through Funding and Community Engagement</b>	<b>Rangers &amp; Real-Time Data: Smarter Operations in the Field</b>	<b>Don't Panic, We Have a Strategy! Resources, Tools, and Local Solutions for Colorado's Outdoors</b>

- 12:15 – 1:15 pm Colorado Lottery Lunch and Keynote Speaker Marcus Robinson

**Parcel 1**

**ID:**7404303011

**Location:** BLACK CANON AVE

**Description:** THAT PART OF LOTS 9, 10 NOT INCLUDED IN HWY RESUB OF LOTS 9 TO 15 INC BLK 16 RED CRAGS  
FIL 2 MANITOU SPGS

**County assigned market value:** \$3,300

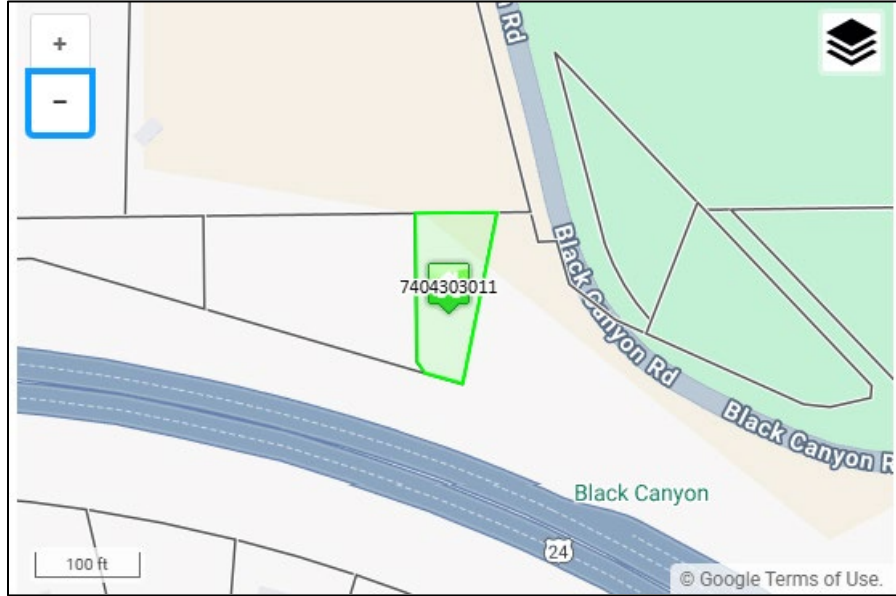


Figure 1 Parcel 7404303011

**Parcel 2**

**ID:**7404303013

**Location:** W HIGHWAY 24

**Description:** TRACT IN SW4 SEC 4-14-67 WHICH IS THAT PART OF FORMER LOTS 6, 7, 8 BLK 16 RED CRAGS FIL 2  
-NOW VAC- LY N OF HWY

**County assigned market value:** \$3,400

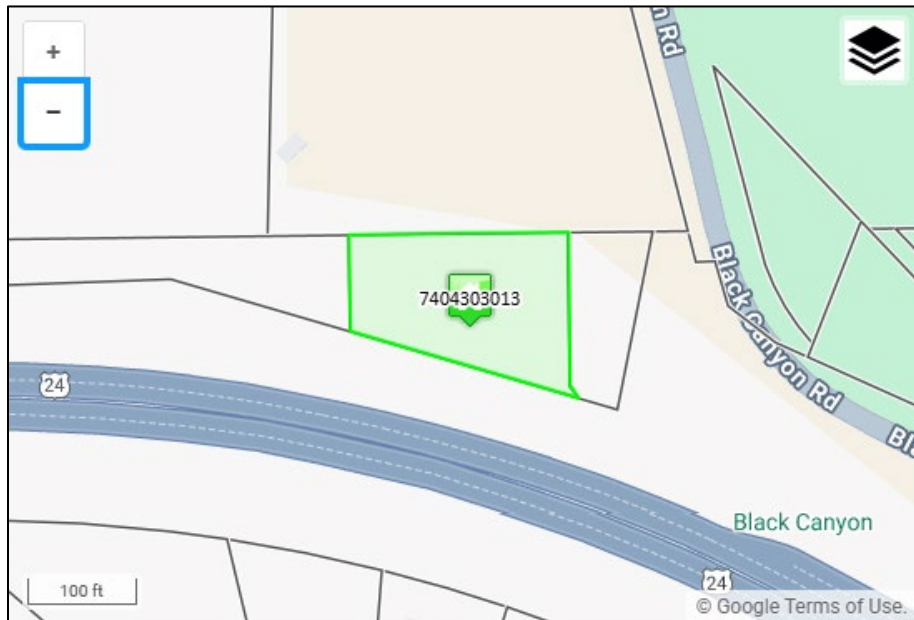


Figure 2 Parcel 7404303013

**Parcel 3**

**ID:**7404303015

**Location:** W HIGHWAY 24

**Description:** TRACT IN N2SE4 SEC 4-14-67 WHICH IS THAT PART OF FORMER LOTS 1 TO 5 INC BLK 16 RED CRAGS FIL 2 MANITOU SPGS -NOW VAC- LY N OF HWY

**County assigned market value:** \$3,300

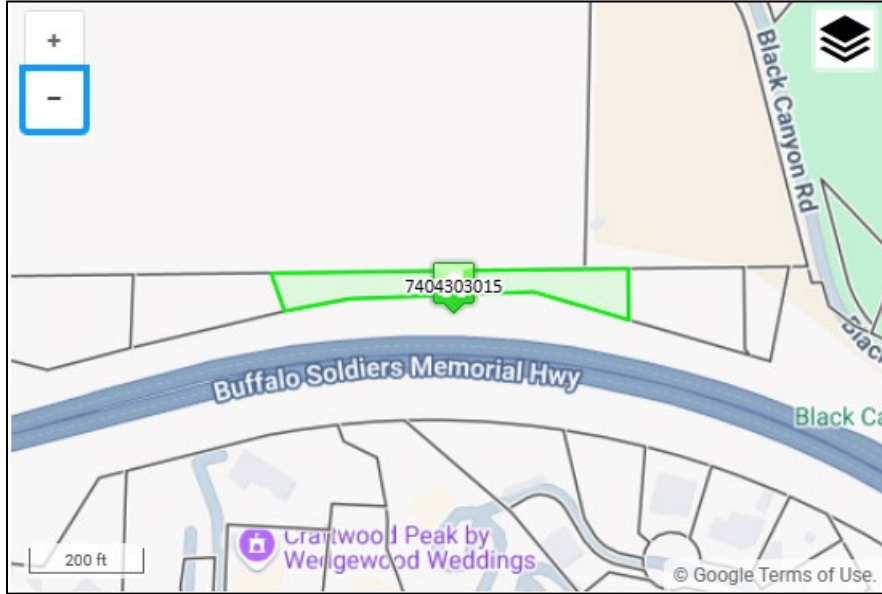


Figure 3 Parcel 7404303015